

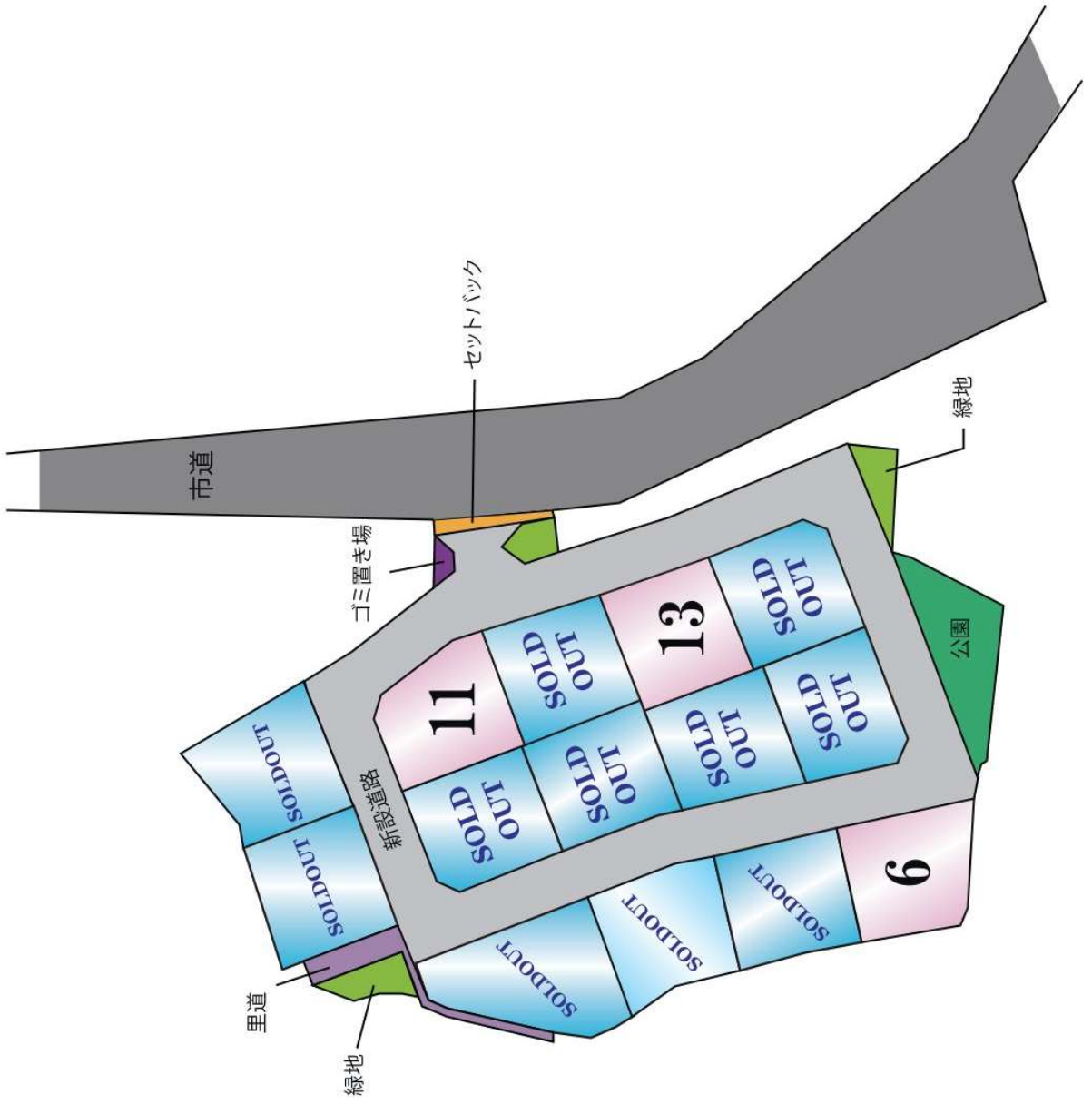
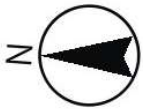
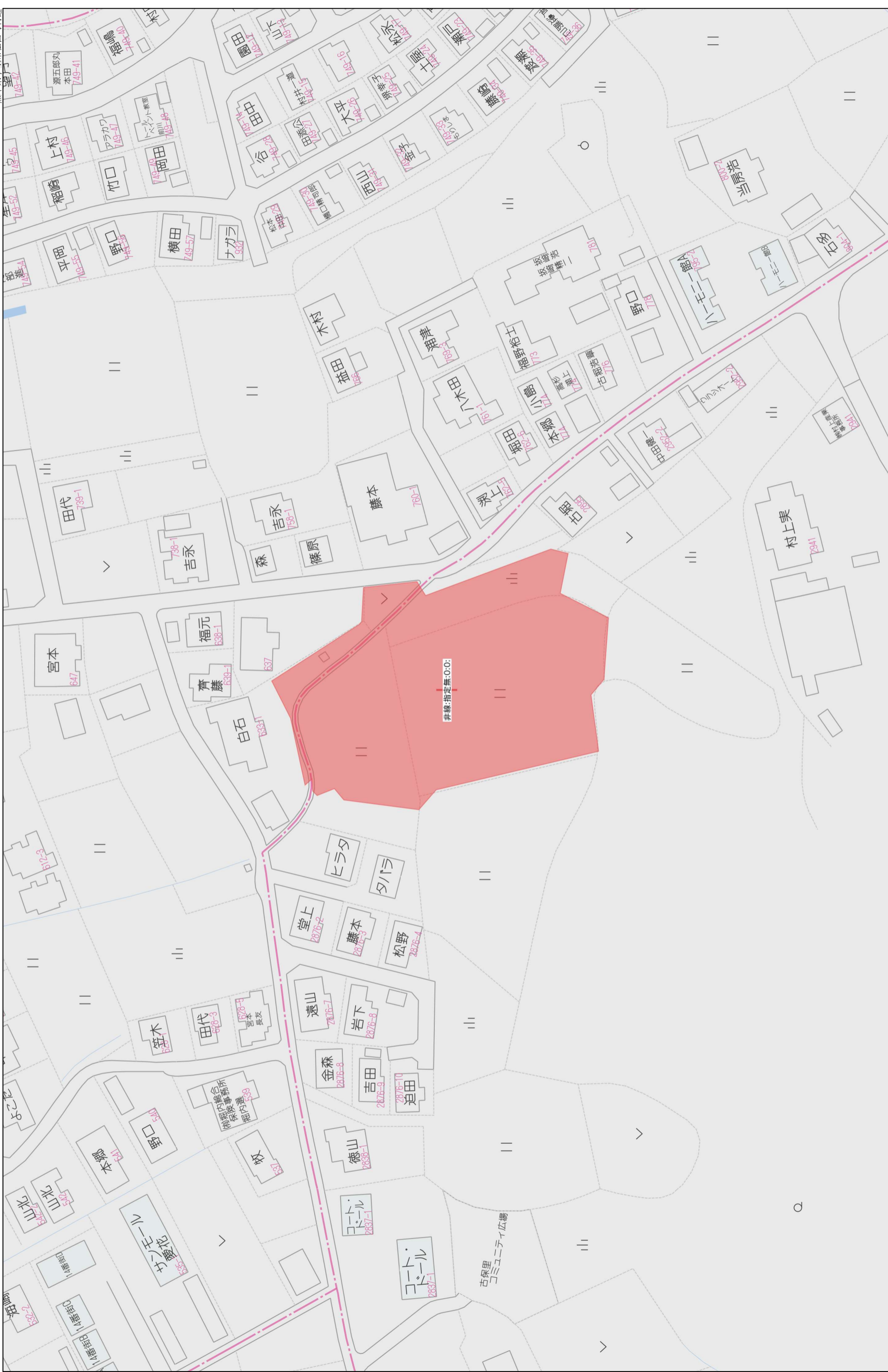


宇土市古保里町 全14区画



所在地	宇土市古保里町字八津江635番【ナビ検索】			区域区分	非線引き区域
売買代金	※価格表参照			用途地域	無指定
土地面積	※価格表参照			電柱	-
接道	分譲地内開発道路 幅員約6m			 	
交通	【バス】 花園小学校前 徒歩約3分				
建ぺい	70%	容積	200%		
地目	宅地	引渡時期	R7年1月以降		
上水	宅内	下水	宅内		
小学校	宇土市立花園小	中学校	宇土市立鶴城中		
備考	・必要経費: 仲介手数料、水道加入金、受益者負担金				
	・埋蔵文化財包蔵地外				
	・建築条件なし				
	SOLD OUT			①204.13㎡ 61.75坪	7,500,000円
	SOLD OUT			SOLD OUT	
	SOLD OUT			⑬204.13㎡ 61.75坪	7,300,000円
	SOLD OUT			SOLD OUT	
	SOLD OUT				
	⑥209.13㎡ 63.26坪			7,200,000円	
	SOLD OUT				
	SOLD OUT				
	SOLD OUT				
	SOLD OUT				
広 告 効 期 限	令和7年7月31日			取引形態: 一般	
熊本県知事(1)第5535号 株式会社 MR不動産 〒862-0951 熊本市中央区上水前寺1丁目12-25 EDEN SUIZENJI 2F TEL:096-284-1286 FAX:096-284-1285					





1:1,000

40m

宇土市松山町・古保里町分譲地

案 3 2024/05/13

土地利用計画平面図
給水施設設計平面図

Scale=1:500

通り抜けてください

面地番号	面積	割合
宅地-1	217.87	
宅地-2	260.87	
宅地-4	209.12	
宅地-5	209.13	
宅地-6	209.13	
宅地-7	204.14	
宅地-8	204.13	
宅地-9	204.13	
宅地-10	204.13	
宅地-11	204.13	
宅地-12	204.13	
宅地-13	204.13	
宅地-14	204.14	
宅地計	2957.05	64.87%
新設道路-1	993.12	
新設道路-2	259.53	
新設道路	1252.65	27.43%
後退道路	19.64	0.43%
付替り道	59.39	1.30%
二之置場	9.40	0.21%
公園	160.61	3.52%
緑地-1	23.91	
緑地-2	37.31	
緑地-3	38.56	
緑地	99.78	2.19%
面積計	4538.54	100.00%
市街化調整区域	260.87	
最大宅地面積	264.13	
最小宅地面積	211.22	
平均宅地面積	211.22	

凡例(土地利用)	凡例	名称
[色]	[記号]	宅地面積
[色]	[記号]	計画道
[色]	[記号]	後退道路
[色]	[記号]	付替り道
[色]	[記号]	既設道路
[色]	[記号]	二之置場
[色]	[記号]	公園緑地
[記号]	[記号]	電柱
[記号]	[記号]	電線
[記号]	[記号]	共同支線
[記号]	[記号]	支線
[記号]	[記号]	支柱
[記号]	[記号]	高圧線
[記号]	[記号]	低圧線
[記号]	[記号]	変圧器



図面名	宇土市松山町分譲地 給水施設設計平面図	縮尺	図示
工事名	宇土市松山町分譲地工事		
所在地	宇土市松山町 44-1		
作成年月日	令和5年10月	図番	2
		図名	設計



求積表

地番	宅地-1	Xn	Yn	Yn+1-Yn-1	Xn · (Yn+1-Yn-1)
M5	-36201.482	-29755.864	9.080	-29709.045650	
5-544	-36191.761	-29771.659	8.706	-31585.471266	
5-545	-36196.845	-29774.379	-11.365	411264.639925	
5-554	-36192.640	-29783.024	-11.225	406835.545400	
P1	-36194.120	-29785.005	2.295	-8703.544900	
P2	-36207.220	-29780.739	19.941	-72208.373400	
合計				-435.747999	
合計面積				217.87	㎡

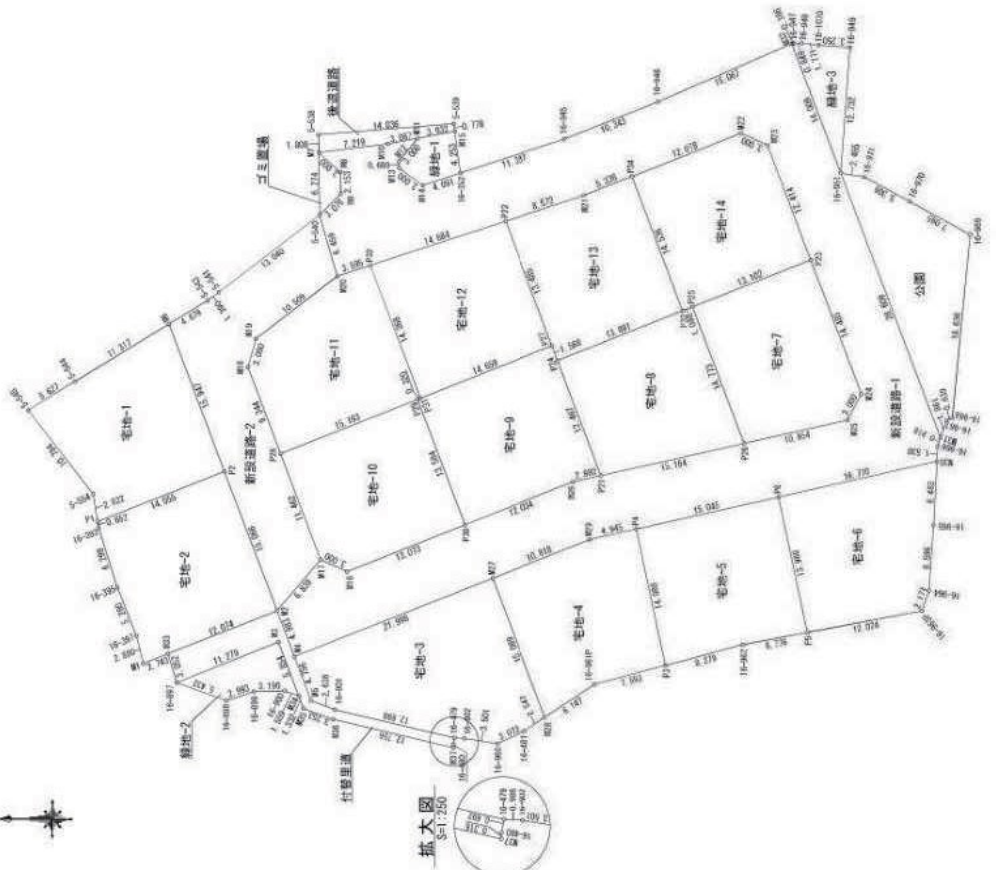
地番	宅地-2	Xn	Yn	Yn+1-Yn-1	Xn · (Yn+1-Yn-1)
P1	-36194.120	-29755.865	-6.708	206596.036650	
16-393	-36194.231	-29736.487	-6.441	240365.838071	
16-395	-36196.152	-29732.448	-10.896	394393.272182	
16-397	-36198.125	-29737.333	-7.697	278264.988875	
M1	-36198.639	-29800.133	2.351	-87243.238288	
M2	-36212.660	-29794.787	19.384	-70206.328840	
P2	-36207.220	-29780.739	8.997	-225394.376010	
合計				-435.782841	
合計面積				217.87	㎡

地番	宅地-3	Xn	Yn	Yn+1-Yn-1	Xn · (Yn+1-Yn-1)
M4	-36214.458	-29799.440	12.365	-447791.748440	
M7	-36224.975	-29791.311	-6.127	22011.691825	
M28	-36240.407	-29805.567	-15.438	559479.403256	
16-481	-36238.297	-29806.949	2.645	-96356.216215	
16-900	-36235.487	-29808.212	-0.724	26596.532778	
16-902	-36332.068	-29807.603	0.577	-20865.867482	
16-479	-36331.031	-29807.635	2.898	-104925.036816	
16-901	-36218.646	-29804.787	3.759	-136145.890314	
M5	-36216.170	-29803.676	5.347	-193941.868950	
合計				521.740562	
合計面積				986.8700010	㎡

地番	宅地-4	Xn	Yn	Yn+1-Yn-1	Xn · (Yn+1-Yn-1)
M7	-36224.975	-29791.511	-17.855	606596.976125	
M28	-36240.407	-29805.567	-10.722	388569.643854	
16-961P	-36245.571	-29802.233	5.250	-190470.476605	
P3	-36252.917	-29800.312	15.681	-568481.901477	
P4	-36248.896	-29786.552	12.300	-460273.679200	
M29	-36245.666	-29787.612	-4.859	179739.282294	
合計				-418.724098	
合計面積				209.12	㎡

地番	宅地-5	Xn	Yn	Yn+1-Yn-1	Xn · (Yn+1-Yn-1)
M0	-36252.817	-29800.312	-11.665	422890.276695	
16-962	-36260.827	-29798.217	3.325	-120567.522275	
P6	-36267.590	-29796.187	14.891	-540960.692690	
P5	-36264.591	-29783.229	10.435	-278421.007085	
P4	-36248.896	-29786.552	-16.396	615740.733456	
合計				-418.712789	
合計面積				209.13	㎡

求積図 S-1.500



地番	宅地-6	Xn	Yn	Yn+1-Yn-1	Xn · (Yn+1-Yn-1)
95	-36267.590	-29796.987	-11.477	416243.190400	
16-963P	-36279.414	-29794.800	4.225	-152880.524190	
16-964	-36290.153	-29792.782	8.619	-317898.630707	
16-965	-36290.638	-29786.164	13.022	-472909.274416	
M0	-36290.971	-29779.730	2.858	-103691.015118	
P6	-36264.591	-29783.226	-17.257	623818.046887	
合計				-418.270574	
合計面積				209.13	㎡

地番	宅地-7	Xn	Yn	Yn+1-Yn-1	Xn · (Yn+1-Yn-1)
M4	-36273.156	-29772.930	16.154	-589565.582024	
P23	-36267.935	-29759.409	8.788	-318272.612780	
P25	-36265.714	-29764.132	-18.503	670670.476142	
P26	-36261.038	-29777.912	-11.031	414698.935778	
M25	-36271.737	-29775.563	4.892	-181668.511104	
合計				-403.284488	
合計面積				204.14	㎡

地番	宅地-8	Xn	Yn	Yn+1-Yn-1	Xn · (Yn+1-Yn-1)
M0	-36255.714	-29764.132	13.385	-485282.731890	
P23	-36254.690	-29764.527	-5.402	195847.835800	
P24	-36241.733	-29769.534	-16.636	602917.470188	
P21	-36246.227	-29781.163	-8.278	303670.898906	
P26	-36261.038	-29777.912	17.031	-617561.738178	
合計				-403.274894	
合計面積				204.13	㎡

地番	宅地-9	Xn	Yn	Yn+1-Yn-1	Xn · (Yn+1-Yn-1)
M0	-36246.227	-29781.163	12.268	-446662.712606	
P24	-36241.733	-29768.534	13.092	-474478.786638	
P27	-36241.168	-29768.071	-3.820	138441.851760	
P31	-36227.494	-29773.354	-5.398	195556.072812	
P29	-36227.195	-29773.469	-12.788	463200.915770	
P20	-36222.091	-29786.140	-8.333	301922.014803	
M26	-36243.216	-29781.802	4.977	-180387.983232	
合計				-403.281659	
合計面積				204.13	㎡

図面名	求積図	縮尺	図示
工事名	宇土山宅地地盤工事		
所在地	宇土山町山内 地内	図番	13-1
作成年月日	令和6年1月	面番	図化
		設計	

求積表

地番	①宅地-10	Yn-1-Yn-1	Yn	Xn · (Yn-1-Yn-1)	Xn · (Yn-1-Yn-1)
N0	-36271.95	-29775.469	7.195	-280654.668025	
N1	-36271.95	-29775.469	-16.168	585492.158864	
N2	-36271.95	-29775.469	-11.907	431337.626278	
N3	-36271.95	-29775.469	3.487	-126660.978809	
N4	-36271.95	-29775.469	17.363	-629822.433853	
合計				204.1385725	204.13

地番	①宅地-11	Yn-1-Yn-1	Yn	Xn · (Yn-1-Yn-1)	Xn · (Yn-1-Yn-1)
N0	-36270.655	-29770.229	-11.599	419985.783345	
N1	-36270.655	-29770.229	3.240	-117330.194520	
N2	-36270.655	-29770.229	5.591	-202546.247245	
N3	-36270.655	-29770.229	13.517	-489887.038368	
N4	-36270.655	-29770.229	12.311	-445832.932276	
N5	-36270.655	-29770.229	-7.394	287892.480054	
N6	-36270.655	-29770.229	-9.186	332829.487653	
合計				-408.265348	204.136740

地番	①宅地-12	Yn-1-Yn-1	Yn	Xn · (Yn-1-Yn-1)	Xn · (Yn-1-Yn-1)
N0	-36271.484	-29775.354	-8.119	294311.027708	
N1	-36271.484	-29775.354	17.861	-647303.507648	
N2	-36271.484	-29775.354	8.119	-294202.578533	
N3	-36271.484	-29775.354	-17.861	646986.780776	
合計				-408.268319	204.134195

地番	①宅地-13	Yn-1-Yn-1	Yn	Xn · (Yn-1-Yn-1)	Xn · (Yn-1-Yn-1)
N0	-36234.307	-29735.493	-15.180	550087.102660	
N1	-36234.307	-29735.493	-14.041	508802.238888	
N2	-36234.307	-29735.493	3.544	-128440.701752	
N3	-36234.307	-29735.493	18.556	-673104.514540	
N4	-36234.307	-29735.493	11.636	-421798.673472	
N5	-36234.307	-29735.493	-4.195	164006.283379	
合計				-408.270241	204.135120

地番	①宅地-14	Yn-1-Yn-1	Yn	Xn · (Yn-1-Yn-1)	Xn · (Yn-1-Yn-1)
N0	-36254.690	-29764.527	-13.164	477556.739160	
N1	-36254.690	-29764.527	5.118	-185586.744205	
N2	-36254.690	-29764.527	16.303	-601276.144205	
N3	-36254.690	-29764.527	12.794	-463384.720034	
N4	-36254.690	-29764.527	-3.139	113882.393802	
N5	-36254.690	-29764.527	17.912	-649300.184224	
合計				-408.291465	204.145765

地番	①新設道路-1	Yn-1-Yn-1	Yn	Xn · (Yn-1-Yn-1)	Xn · (Yn-1-Yn-1)
N0	-36214.973	-29748.573	2.878	-103471.891861	
N1	-36214.973	-29748.573	1.442	-52245.205554	
N2	-36214.973	-29748.573	-1.765	63940.962110	
N3	-36214.973	-29748.573	-1.765	63940.962110	
N4	-36214.973	-29748.573	-2.431	88043.687130	
N5	-36214.973	-29748.573	4.599	-16593.989853	
N6	-36214.973	-29748.573	1.135	-40402.111025	
N7	-36214.973	-29748.573	9.603	-38179.041139	
N8	-36214.973	-29748.573	-1.193	20881.244891	
N9	-36214.973	-29748.573	-31.754	1441918.165144	
N10	-36214.973	-29748.573	-2.397	86985.678950	
N11	-36214.973	-29748.573	-5.124	185803.695404	
N12	-36214.973	-29748.573	-6.428	24787.039602	
N13	-36214.973	-29748.573	-4.286	155857.852456	
N14	-36214.973	-29748.573	-1.829	179739.282294	
N15	-36214.973	-29748.573	-11.828	428397.284300	
N16	-36214.973	-29748.573	4.648	-188231.881688	
N17	-36214.973	-29748.573	7.854	-288085.407640	
N18	-36214.973	-29748.573	3.497	-126860.978809	
N19	-36214.973	-29748.573	9.080	-327900.423550	
N20	-36214.973	-29748.573	4.977	-180382.983732	
N21	-36214.973	-29748.573	3.890	-140987.872000	
N22	-36214.973	-29748.573	5.600	-203801.812900	
N23	-36214.973	-29748.573	4.992	-181088.511104	
N24	-36214.973	-29748.573	16.154	-585556.562024	
N25	-36214.973	-29748.573	25.091	-969988.751085	
N26	-36214.973	-29748.573	12.794	-463384.720034	
N27	-36214.973	-29748.573	-6.276	227591.568702	
N28	-36214.973	-29748.573	-4.535	164006.283752	
N29	-36214.973	-29748.573	-7.001	255884.583777	
N30	-36214.973	-29748.573	-5.550	201033.853800	
N31	-36214.973	-29748.573	5.196	-184833.657446	
N32	-36214.973	-29748.573	8.348	-302340.109708	
N33	-36214.973	-29748.573	4.394	-158887.780800	
N34	-36214.973	-29748.573	4.122	-149286.766602	
合計				993.1283700	993.12

地番	①新設道路-2	Yn-1-Yn-1	Yn	Xn · (Yn-1-Yn-1)	Xn · (Yn-1-Yn-1)
N0	-36212.660	-29746.615	8.398	-322220.248660	
N1	-36212.660	-29746.615	28.928	-1047462.744440	
N2	-36212.660	-29746.615	17.217	-625255.795422	
N3	-36212.660	-29746.615	3.197	-115748.986697	
N4	-36212.660	-29746.615	1.624	-58816.523304	
N5	-36212.660	-29746.615	-17.500	63238.461552	
N6	-36212.660	-29746.615	-5.186	32029.461652	
N7	-36212.660	-29746.615	-11.589	41995.789345	
N8	-36212.660	-29746.615	-19.408	70222.330904	
N9	-36212.660	-29746.615	-15.847	57933.239438	
合計				518.05362	259.537810

地番	①新設道路-3	Yn-1-Yn-1	Yn	Xn · (Yn-1-Yn-1)	Xn · (Yn-1-Yn-1)
N0	-36212.660	-29746.615	8.398	-322220.248660	
N1	-36212.660	-29746.615	28.928	-1047462.744440	
N2	-36212.660	-29746.615	17.217	-625255.795422	
N3	-36212.660	-29746.615	3.197	-115748.986697	
N4	-36212.660	-29746.615	1.624	-58816.523304	
N5	-36212.660	-29746.615	-17.500	63238.461552	
N6	-36212.660	-29746.615	-5.186	32029.461652	
N7	-36212.660	-29746.615	-11.589	41995.789345	
N8	-36212.660	-29746.615	-19.408	70222.330904	
N9	-36212.660	-29746.615	-15.847	57933.239438	
合計				993.1283700	993.12

地番	①新設道路-4	Yn-1-Yn-1	Yn	Xn · (Yn-1-Yn-1)	Xn · (Yn-1-Yn-1)
N0	-36212.660	-29746.615	8.398	-322220.248660	
N1	-36212.660	-29746.615	28.928	-1047462.744440	
N2	-36212.660	-29746.615	17.217	-625255.795422	
N3	-36212.660	-29746.615	3.197	-115748.986697	
N4	-36212.660	-29746.615	1.624	-58816.523304	
N5	-36212.660	-29746.615	-17.500	63238.461552	
N6	-36212.660	-29746.615	-5.186	32029.461652	
N7	-36212.660	-29746.615	-11.589	41995.789345	
N8	-36212.660	-29746.615	-19.408	70222.330904	
N9	-36212.660	-29746.615	-15.847	57933.239438	
合計				993.1283700	993.12

地番	①旧設道路	Yn-1-Yn-1	Yn	Xn · (Yn-1-Yn-1)	Xn · (Yn-1-Yn-1)
N0	-36216.945	-29746.765	2.919	-105717.262455	
N1	-36216.945	-29746.765	0.340	-12318.185850	
N2	-36216.945	-29746.765	-1.477	5313.249034	
N3	-36216.945	-29746.765	1.260	-4568.239240	
N4	-36216.945	-29746.765	-1.442	5235.205544	
N5	-36216.945	-29746.765	0.820	-3319.615160	
N6	-36216.945	-29746.765	38.29632	-18439.907953	
合計				19.648885	19.64

地番	①付替道路	Yn-1-Yn-1	Yn	Xn · (Yn-1-Yn-1)	Xn · (Yn-1-Yn-1)
N0	-36214.456	-29794.792	-0.296	10718.947380	
N1	-36214.456	-29794.792	-9.084	328972.118304	
N2	-36214.456	-29794.792	-5.347	193647.869900	
N3	-36214.456	-29794.792	-3.759	13645.880314	
N4	-36214.456	-29794.792	-3.527	127796.811067	
N5	-36214.456	-29794.792	-0.995	36649.755550	
N6	-36214.456	-29794.792	2.544	-92171.379072	
N7	-36214.456	-29794.792	3.972	-143659.711204	
N8	-36214.456	-29794.792	2.354	-85851.051600	
N9	-36214.456	-29794.792	6.703	-24748.609760	
N10	-36214.456	-29794.792	1.558	-49176.995980	
N11	-36214.456	-29794.792	-1.189	43844.508456	
N12	-36214.456	-29794.792	7.266	-26309.357868	
N13	-36214.456	-29794.792	59.392785	-118.769557	
合計				59.392785	59.39

地番	①付替道路	Yn-1-Yn-1	Yn	Xn · (Yn-1-Yn-1)	Xn · (Yn-1-Yn-1)
N0	-36216.973	-29748.573	4.304	-155877.851792	
N1	-36216.973	-29748.573	-4.122	149295.698792	
N2	-36216.973	-29748.573	-4.304	155887.780800	
N3	-36216.973	-29748.573	4.122	-149286.766602	
N4	-36216.973	-29748.573	18.818468	-94312.573975	
合計				9.4029300	9.40

地番	①付替道路	Yn-1-Yn-1	Yn	Xn · (Yn-1-Yn-1)	Xn · (Yn-1-Yn-1)
N0	-36217.036	-29750.647	26.311	-954327.228196	
N1	-36217.036	-29750.647	-2.644	103161.725928	
N2	-36217.036	-29750.647	-5.823	212487.137326	
N3	-36217.036	-29750.647	-21.897	794519.813358	
N4	-36217.036	-29750.647	-18.727	679463.310001	
N5	-36217.036	-29750.647	-1.845	70568.388750	
N6	-36217.036	-29750.647	24.525	-984312.573975	
N7	-36217.036	-29750.647	321.232222	-160.6186110	
合計				162.61	162.61

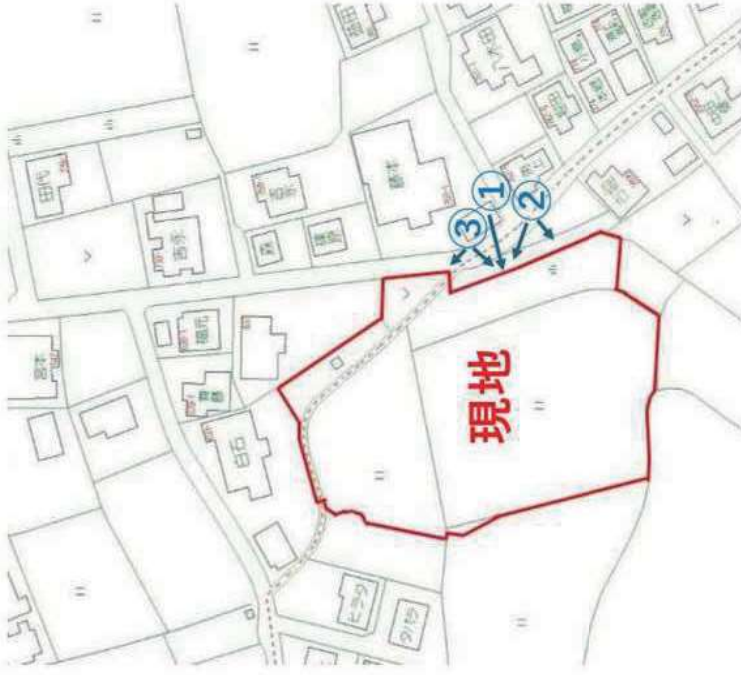
地番	②宅地-1	Yn-1-Yn-1	Yn	Xn · (Yn-1-Yn-1)	Xn · (Yn-1-Yn-1)
N0	-36225.281	-29750.130	2.431	-88063.658111	
N1	-36225.281	-29750.130	2.999	-108839.584720	
N2	-36225.281	-29750.130	3.025	-109587.201350	
N3	-36225.281	-29750.130	-3.508	127088.483336	
N4	-36225.281	-29750.130	-5.456	197679.691440	
N5	-36225.281	-29750.130	0.509	-18439.907953	
合計				23.917360	23.91

地番	②宅地-2	Yn-1-Yn-1	Yn	Xn · (Yn-1-Yn-1)	Xn · (Yn-1-Yn-1)
N0	-36202.304	-29802.058	5.926	-214534.853504	
N1	-36202.304	-29802.058			

宇土市古保里町字八津江 635、636-1

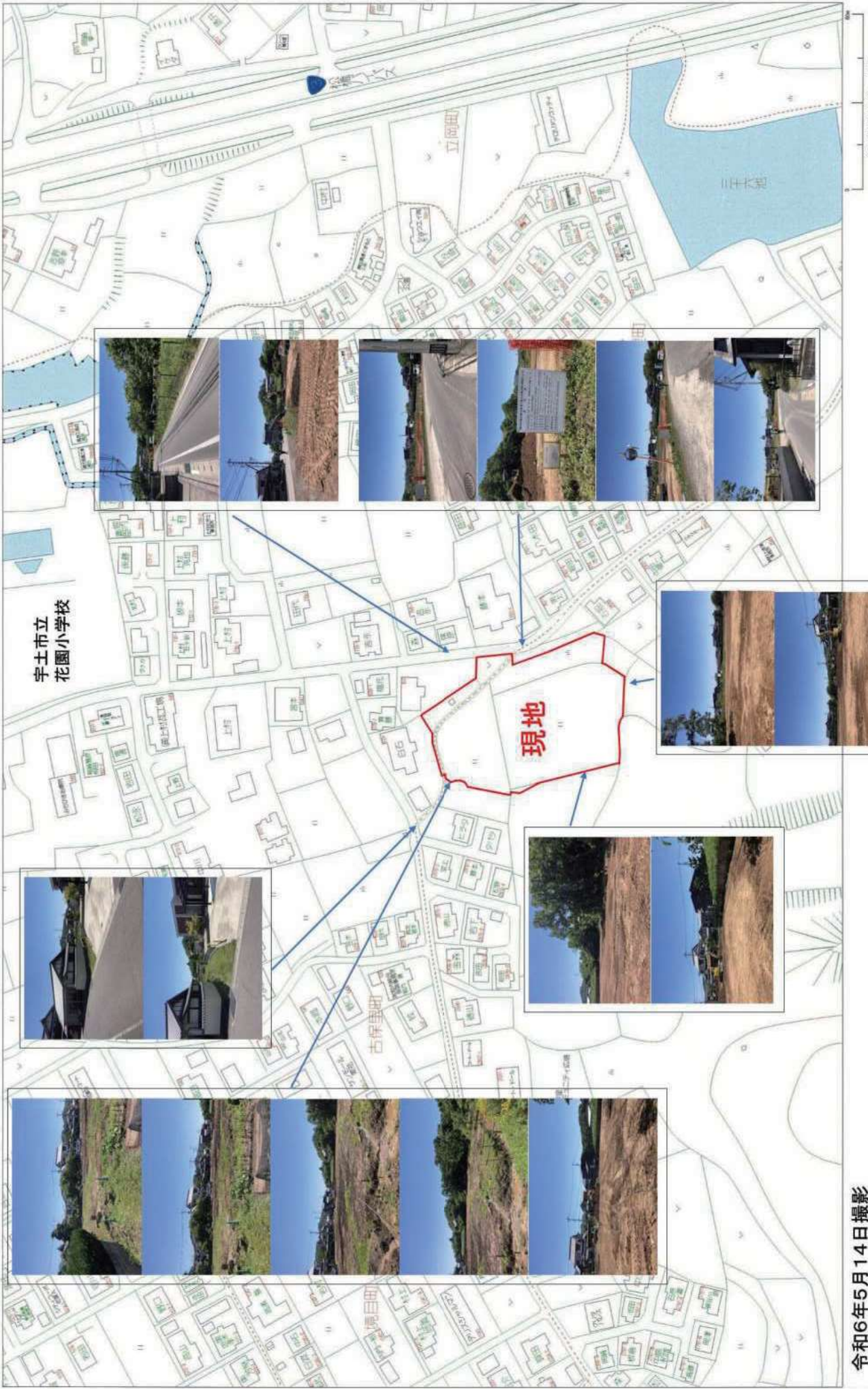
宇土市松山町字東原 2880-2、2889、2890、2891、2893、2898

令和6年7月2日 撮影



③





宇土市立
花園小学校

現地

令和6年5月14日撮影